



Innovation in Pediatric Access to Healthcare Using a Statewide Provider Collaborative and Cross-sector Collaboration

Chelsea Bodnar, MD, MPhil, FAAP, Allison Young MD, FAAP, Sarah Hoxea MD, MEd, FAAP, Emily Hall, DO FAAP
Robert Wood Johnson Clinical Scholars Program Cohort 3

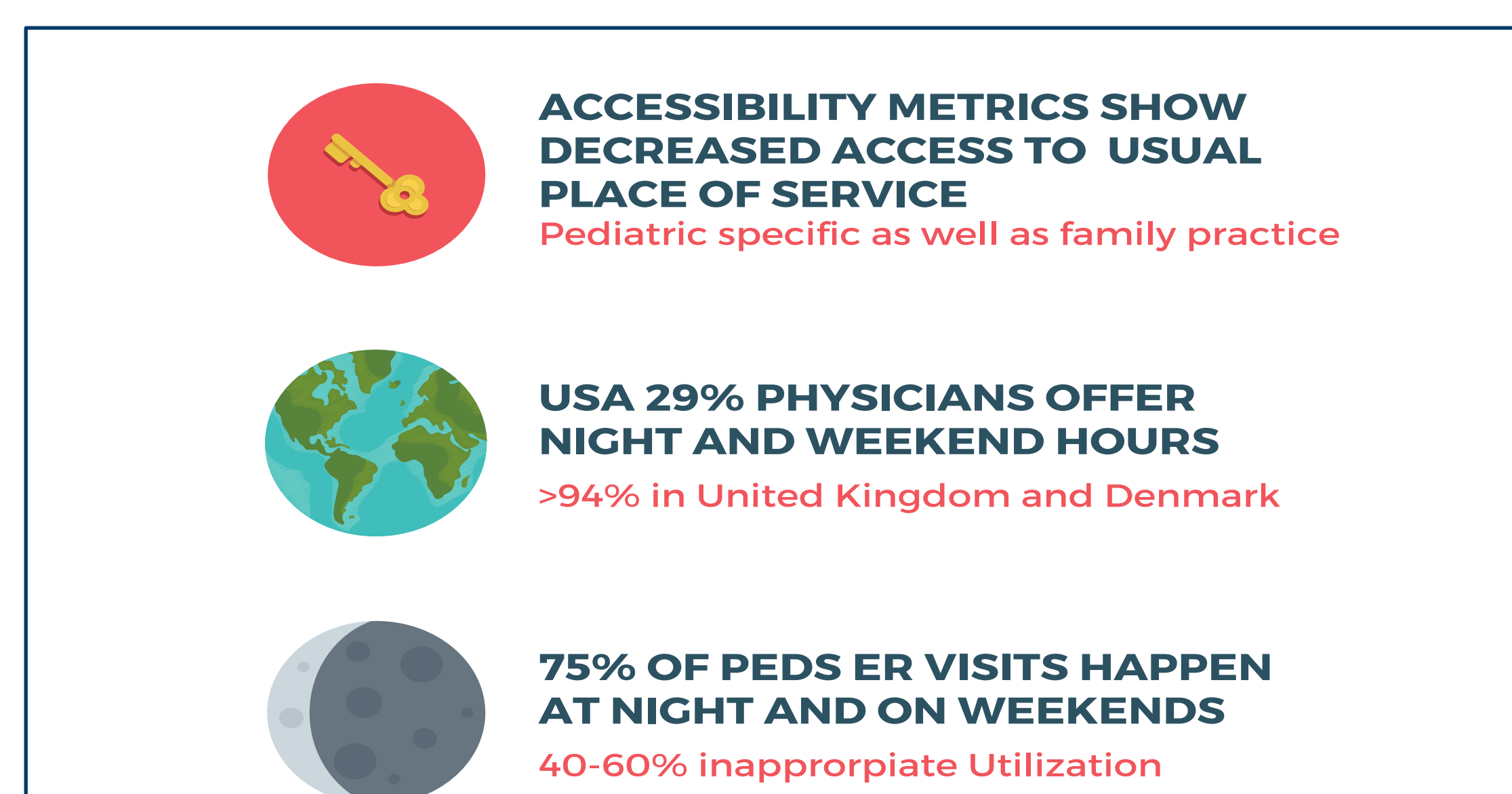
CLINICAL
SCHOLARS

BACKGROUND

Child health outcomes in Montana (MT) are poor:

- 46th overall in clinical care
- 43rd in child mortality
- 47th in adverse childhood experiences and 50% in policy measures for children

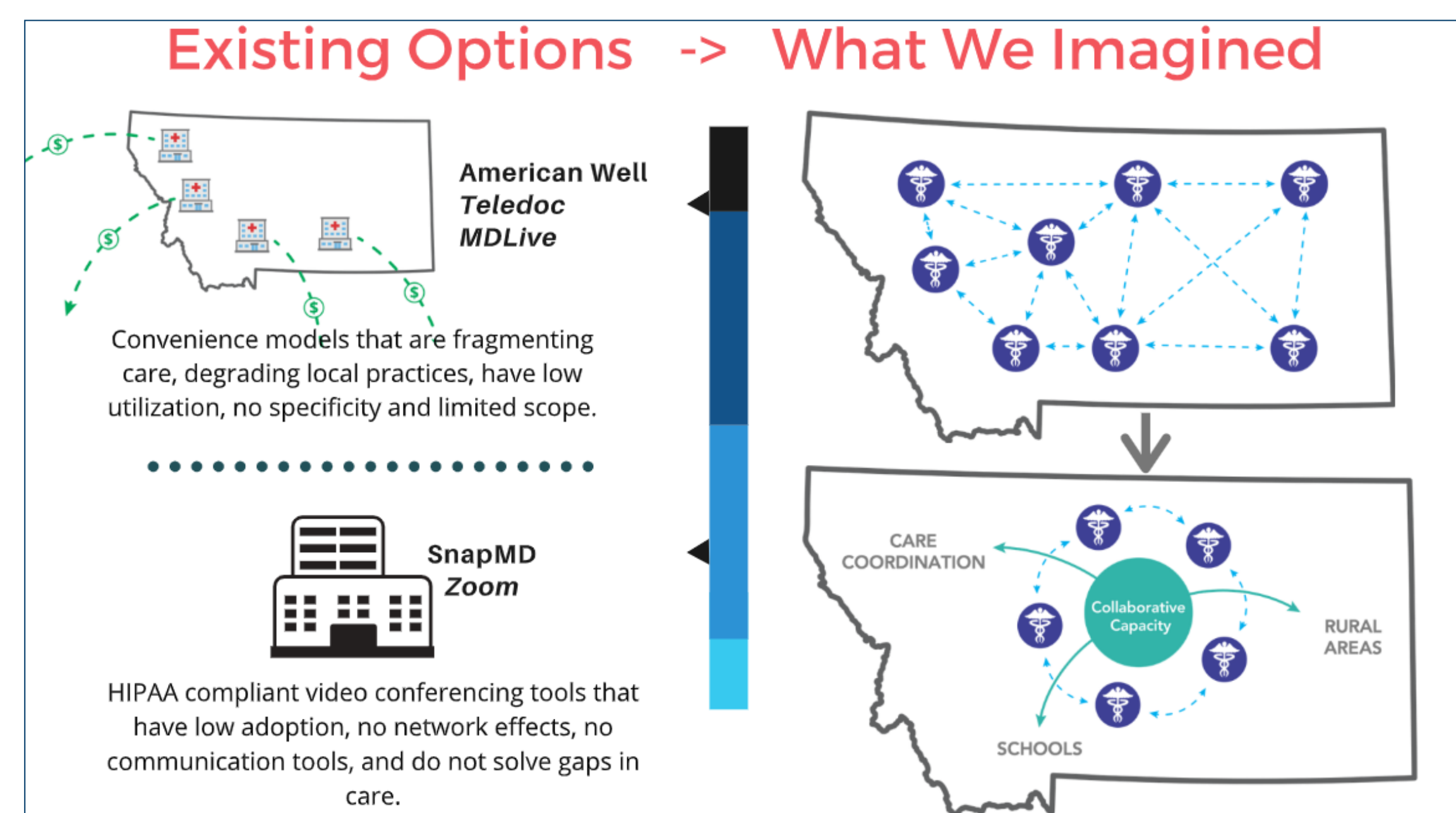
Gaps in Access to Quality Care identified:



WPIP Focus:

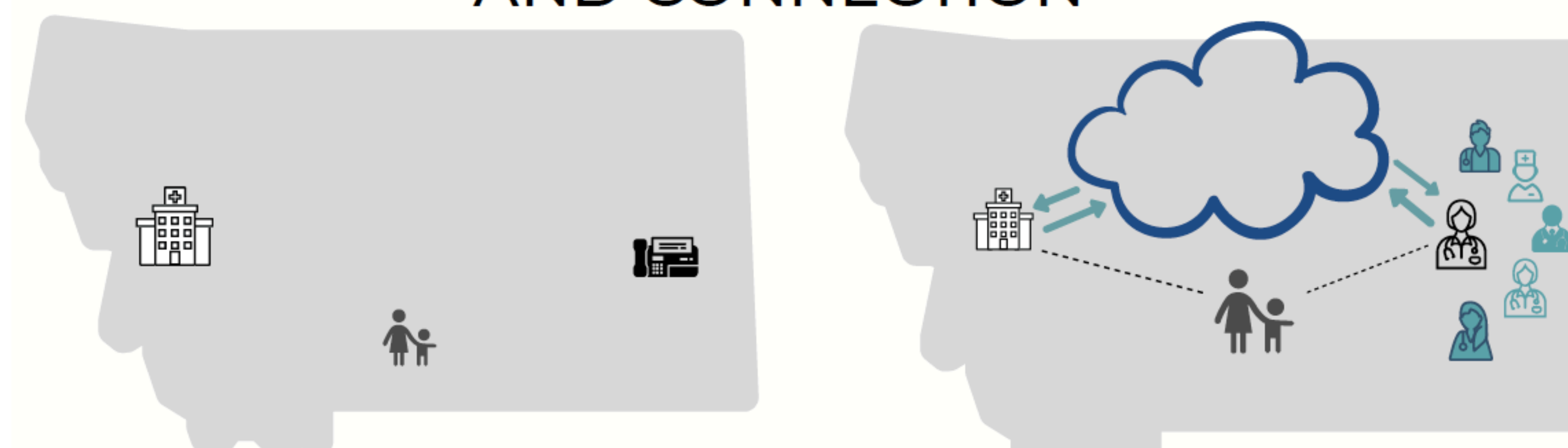
Build a collaborative pediatric workforce by utilizing new adaptations of telemedicine to improve access to quality pediatric care.

Goals:



- Improve access to quality pediatric care using a virtual team of geographically isolated Montana pediatricians unified by a shared goal to bridge gaps in pediatric care using telemedicine
- Foster provider driven technology innovation
- Incorporate family and provider voices into building effective and dynamic shared care plans for Children with Medical Complexity (CMC) through Ahana technology

FROM ISOLATION AND SILOS TO CONTINUITY AND CONNECTION



MEANINGFUL
ACCESS

Local Knowledge
Trust
Continuity

PUBLIC HEALTH
AND ECONOMICS

Measles, Covid-19
Parent Employment
Physician Retention

TRANSITIONS IN
CARE

Bridge Clinics
Return to Rural Community
NICU Graduates

ACTIVITIES

Provider Engagement:

Year 1

- 15 pediatric champions recruited to participate in 26-week pilot to provide after-hours access across MT using collaborative telehealth model
- MT AAP presentation & telemedicine award

Year 2

- Collaborative pediatric completed a proof of implementation offering 52 weeks of continuous after-hours telemedicine coverage to Montana's children/families
- Designed and completed Maintenance of Certification (MOC) Part 4 Project among participating providers
- 55 Cloud-based shared care plans completed by providers

Family, Community & State Engagement:

- Family/Title V Innovation Advisory Committee
- University of Montana Rural Institute partnership
- HRSA Care Coordination Challenge Phase II winners.
- MSRGN/Parent Partners engagement for CYSHCN

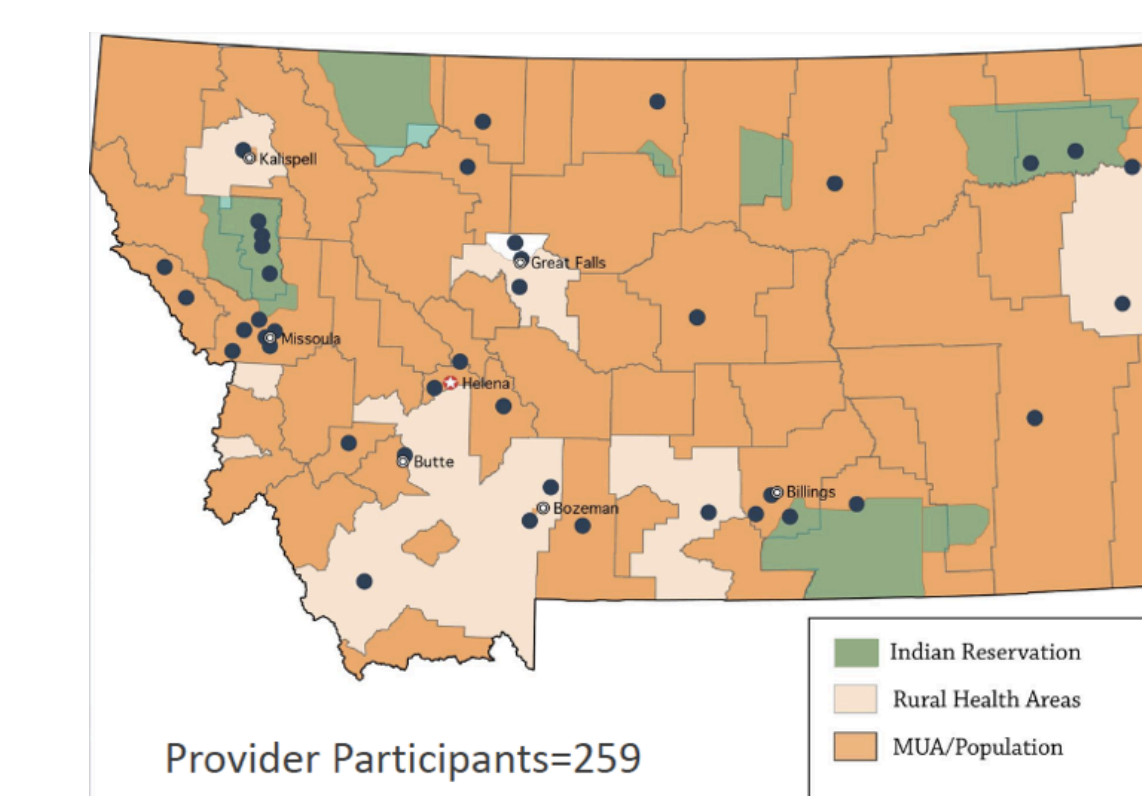
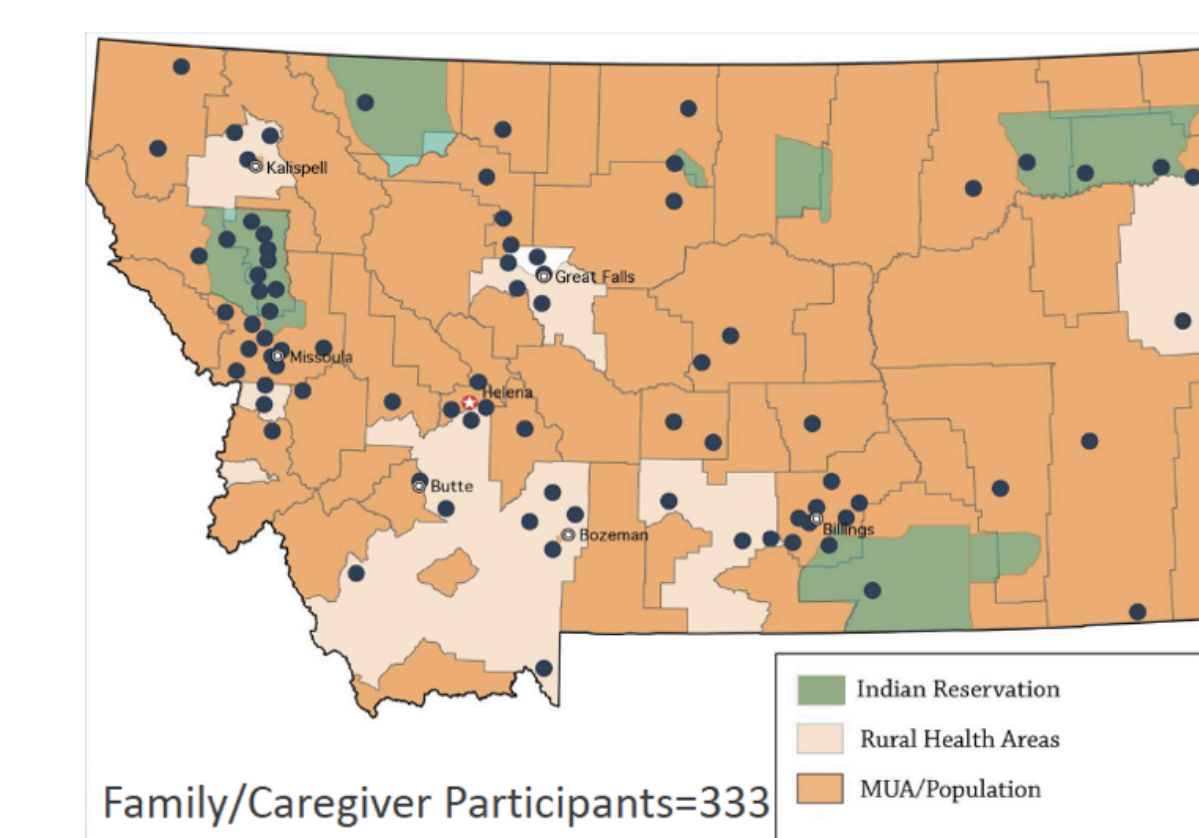
Health System Engagement

- 5 health system engagements

Payor Engagement & Collaboration

- Blue Cross Blue Shield of Montana invests \$400k in advancing our model of innovative and collaborative technology-based healthcare solutions

FINDINGS

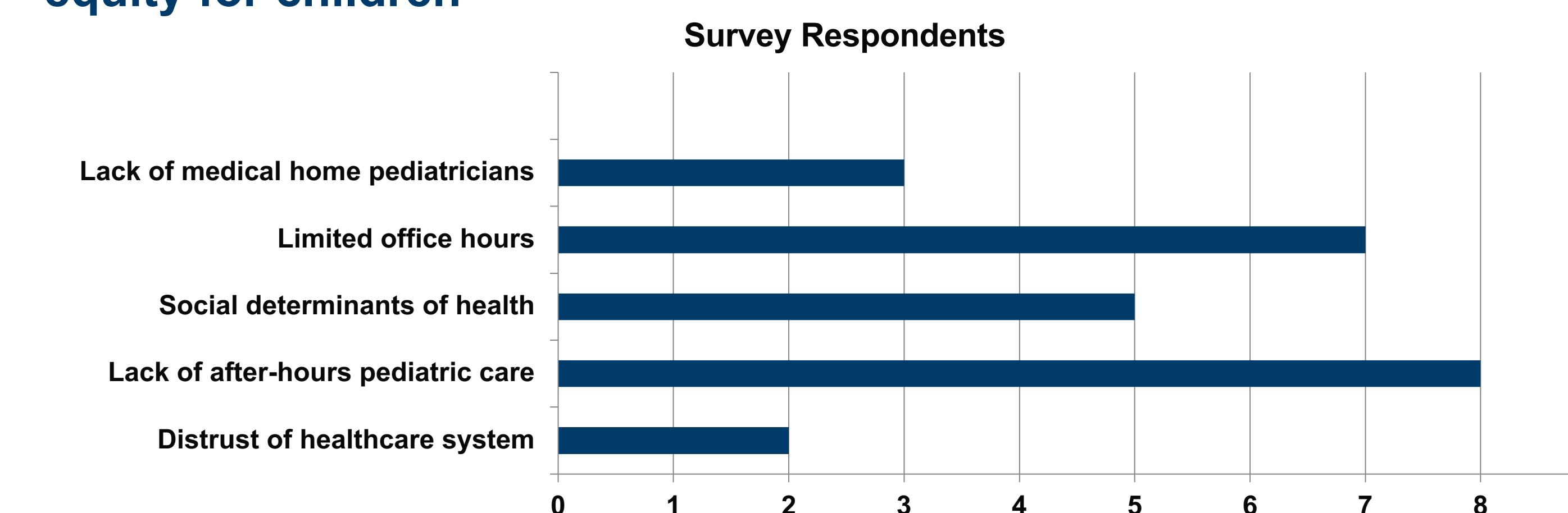


Survey of MT families/providers regarding access to medical care, use of technology and care for a child with special health care needs.

Caregivers reported high rates of mobile technology ownership:

- 97% have smartphones and 81% have laptop computers
- 95% use apps on their phones
- 32% of the total said they run out of data routinely
- 36% reported having limited to no access to needed pediatric medical services in their area;
 - of these, 94% experienced seeking medical care for a child when their regular doctor was unavailable

Survey of MT providers regarding perceptions of barriers to health equity for children



FUTURE DIRECTIONS

- Ongoing provider recruitment and training on delivery of telemedicine through a statewide collaborative model
- Improving equity access through outreach to Fort Peck Tribes
- Ongoing evaluation of technology use through provider MOC
- Expanded after hours virtual access across Montana
- Deployment of cloud-based shared care plans for CMC to improve care coordination

Learn More: www.ahanapediatrics.com

Support for this project was provided by a grant from Clinical Scholars, a Robert Wood Johnson Foundation program.